

UNIVERSIDADE FEDERAL DE ALFENAS

LARISSA CARVALHO NOVAES BATISTA

**ESTUDO EXPERIMENTAL COMPARANDO AS PROPRIEDADES FÍSICO-
QUÍMICAS E CARACTERIZAÇÃO DE SUPERFÍCIE DO 5MO E DO MTA BRANCO**

ALFENAS/MG

2024

LARISSA CARVALHO NOVAES BATISTA

**ESTUDO EXPERIMENTAL COMPARANDO AS PROPRIEDADES FÍSICO-
QUÍMICAS E CARACTERIZAÇÃO DE SUPERFÍCIE DO 5MO E DO MTA BRANCO**

Dissertação apresentada como parte dos requisitos para obtenção do título de Mestre em Ciências Odontológicas pela Faculdade de Odontologia da Faculdade Federal de Alfenas. Área de concentração: Biologia dos tecidos do complexo bucomaxilofacial.

Orientador: Prof. Dr. Bruno Martini Guimarães

ALFENAS/MG

2024

Sistema de Bibliotecas da Universidade Federal de
Alfenas Biblioteca Central

Batista, Larissa Carvalho Novaes.

Estudo experimental comparando propriedades físico-químicas e caracterização de superfície do 5MO e do MTA Branco / Larissa Carvalho Novaes Batista. - Alfenas, MG, 2024.

55 f. : il. –

Orientador(a): Bruno Martini Guimarães.

Dissertação (Mestrado em Ciências Odontológicas) - Universidade Federal de Alfenas, Alfenas, MG, 2024.

Bibliografia.

1. Materiais dentários. 2. Propriedades químicas. 3. Silicato de cálcio. 4. Endodontia regenerativa. I. Guimarães, Bruno Martini, orient. II. Título.

LARISSA CARVALHO NOVAES BATISTA

***AVALIAÇÃO DAS PROPRIEDADES FÍSICO-QUÍMICAS DE UM CIMENTO BIOCERÂMICO REPARADOR
QUE CONTÉM 5 ÓXIDOS***

O Presidente da banca examinadora abaixo assina a aprovação da Dissertação apresentada como parte dos requisitos para a obtenção do título de Mestre em Ciências Odontológicas pela Universidade Federal de Alfenas. Área de concentração: Odontologia

Aprovada em: 31 de julho de 2024.

Prof. Dr. Bruno Martini Guimarães

Presidente da Banca Examinadora

Instituição: Universidade Federal de Alfenas-MG

Profa. Dra. Marina Lara de Carli Dias

Instituição: Universidade Federal de Alfenas-MG

Profa. Dra. Camila Soares Lopes

Instituição: Universidade Federal de Alfenas-MG



Documento assinado eletronicamente por **Bruno Martini Guimarães**,
Coordenador(a) do Programa de Pós-Graduação em Ciências Odontológicas, em
31/07/2024, às 16:18, conforme horário oficial de Brasília, com fundamento no art.
6º, § 1º, do [Decreto nº 8.539, de 8 de outubro de 2015](#).



A autenticidade deste documento pode ser conferida no site https://sei.unifal-mg.edu.br/sei/controlador_externo.php?acao=documento_conferir&id_orgao_acesso_externo=0, informando o código verificador **1298084** e o código CRC **21D95386**.

Dedico este trabalho aos meus
filhos Otávio e Pedro.

AGRADECIMENTOS

Nesses anos de mestrado, na maioria das vezes não foi fácil. Dividir o tempo entre jornada dupla de trabalho, estudo e estrada, foi um desafio constante. Por isso, não posso deixar de agradecer a todas as pessoas que fizeram parte desse caminho e me ajudaram a concretizar esse processo.

Primeiramente, agradeço meu maior incentivador, Rodrigo. Meu amor, aquele que compartilhou comigo todos os momentos bons e ruins e que me fez ser forte em momentos em que pensei que não iria conseguir. Sou profundamente grata por você ser meu parceiro de vida e meu porto seguro.

Agradeço aos meus filhos Otávio e Pedro, meus maiores tesouros e motivação diária para meu crescimento profissional. Obrigada por serem pacientes nos momentos de ausência e por nunca deixarem de me apoiar.

Aos meus pais, Claudete e Carlos. Minha fonte de inspiração, minha base. Se não fosse por vocês, não teria chegado aqui hoje. Tenho muito orgulho e alegria de poder seguir os seus passos e hoje poder dizer que sou dentista como meu pai e professora como minha mãe.

Agradeço às minhas queridas tias Lur, Eli e Fram, que me acolheram e mimaram sempre de forma carinhosa e amorosa, com almoços, cafezinhos e caminhadas. Também não posso deixar de agradecer minha prima/irmã Lailah, que sempre me encorajou, foi meu exemplo e uma das responsáveis por eu ter chegado até aqui. À minha irmã, Ine, por estar sempre comigo em todos os momentos da minha vida.

O mestrado me deu um grande presente, uma amiga querida, companheira, dedicada, que não mediu esforços pra me ajudar a concluir essa jornada. Jaque, nossa amizade começou aqui, mas sei que ainda teremos muitas páginas para escrever juntas.

Aos meus queridos amigos e colegas de trabalho, Paulo e Fer por me apoiarem, por me cobrirem nos momentos que precisei ir para Alfenas, por me deixarem desabafar nos momentos de cansaço e também pelas risadas.

Gostaria de expressar minha profunda gratidão ao meu orientador, Bruno Martini Guimarães, pela sua paciência, sabedoria e apoio ao longo desses anos. Sua compreensão e orientação foram fundamentais para o meu crescimento acadêmico e profissional. Agradeço também à Camilinha por todo o suporte e pela confiança

depositada em mim como profissional. Vocês sempre terão um lugar especial em meu coração.

À equipe e aos funcionários da UNIFAL, expressei meu profundo agradecimento pelo ambiente acadêmico acolhedor e pelos recursos valiosos que foram disponibilizados para minha pesquisa. Seu profissionalismo e dedicação foram essenciais e contribuíram de maneira significativa para o desenvolvimento deste estudo.

Agradeço à empresa Angelus e ao amigo Amjad Abu Hasna pelo fornecimento dos cimentos utilizados durante a pesquisa.

O presente trabalho foi realizado, parcialmente, com o apoio da Fundação de Amparo à Pesquisa do Estado de Minas Gerais (FAPEMIG).

O presente trabalho foi realizado com apoio da Coordenação de Aperfeiçoamento de Pessoal de Nível Superior - Brasil (CAPES) - Código de Financiamento 001.

“A experiência é o nome que
damos aos nossos erros.”
(Oscar Wilde, 1854)

RESUMO

Materiais endodônticos reparadores desempenham um papel crucial na manutenção da funcionalidade dentária ao melhorar os resultados de cicatrização e prevenir extrações. O agregado de trióxido mineral (MTA), um cimento à base de silicato de cálcio, destaca-se por sua bioatividade e biocompatibilidade, sendo considerado padrão ouro em reparos endodônticos. Porém, novos materiais têm sido desenvolvidos, como por exemplo, o cimento de cinco óxidos minerais (5MO). Este estudo teve como objetivo comparar as propriedades físico-químicas dos materiais 5MO e MTA Branco, com foco no pH, tempo de presa, solubilidade, composição química e caracterização de superfície. Analisou-se o pH à 37°C em 3, 12, 24, 72 horas, e 7, 14, 21 dias e o tempo de presa seguiu a norma ISO 6876-2012. Para o teste de solubilidade, as amostras foram pesadas, armazenadas em PBS por 24 horas, secas e pesadas novamente. A solubilidade foi calculada usando a perda de peso das amostras (%). A análise de superfície dos cimentos foi realizada por microscopia eletrônica de varredura (MEV) e espectroscopia por dispersão de energia acoplada (EDS) e a química por teste de espectroscopia infravermelha transformada de Fourier (FTIR) (37-100°C). Os dados foram analisados pelo teste de Shapiro-Wilk e t de *Student* ($p < 0.05$). Ambos os materiais mantiveram pH alcalino ao longo do período de estudo, essencial para atividade antimicrobiana e mineralização tecidual. No entanto, o MTA Branco manteve maior alcalinidade aos 21 dias, indicando potenciais vantagens de estabilidade a longo prazo. A análise do tempo de presa revelou que o 5MO possui um tempo de presa significativamente maior em comparação com o MTA Branco, o que pode impactar a eficiência do manuseio clínico. Além disso, o 5MO demonstrou maior solubilidade após imersão em PBS, comprometendo potencialmente a estabilidade do material e a eficácia de vedação ao longo do tempo. A caracterização de superfície utilizando MEV/EDS destacou morfologias e composições de partículas distintas, enquanto a análise FTIR diferenciou ainda mais as ligações químicas e os produtos de hidratação entre os cimentos. Em conclusão, embora o 5MO apresente uma alcalinidade promissora e uma composição elemental favorável à regeneração tecidual, seu tempo de endurecimento mais longo e maior solubilidade em comparação com o MTA Branco podem limitar sua utilidade clínica.

Palavras-chave: Materiais dentários; propriedades químicas; silicato de cálcio; Endodontia regenerativa.

ABSTRACT

Repairing endodontic materials play a crucial role in maintaining dental functionality by improving healing outcomes and preventing extractions. Mineral trioxide aggregate (MTA), a calcium silicate-based cement, stands out for its bioactivity and biocompatibility, being considered the gold standard in endodontic repairs. However, new materials have been developed, such as the five mineral oxides cement (5MO). This study aimed to compare the physicochemical properties of 5MO and White MTA, focusing on pH, setting time, solubility, chemical composition, and surface characterization. The pH was analyzed at 37°C at 3, 12, 24, 72 hours, and 7, 14, 21 days, and the setting time test followed ISO 6876-2012 standard. For the solubility test, samples were weighed, stored in distilled and deionized water for 24 hours, dried, and weighed again. Solubility was calculated using the samples' weight loss (%). Surface analysis of the cements was performed by scanning electron microscopy (SEM) and energy-dispersive X-ray spectroscopy (EDS), and chemical analysis by Fourier-transform infrared spectroscopy (FTIR) (37-100°C). Data were analyzed using Shapiro-Wilk and Student's t-test ($p < 0.05$). Both materials maintained an alkaline pH throughout the study period, essential for antimicrobial activity and tissue mineralization. However, White MTA maintained higher alkalinity at 21 days, indicating potential long-term stability advantages. Setting time analysis revealed that 5MO has a significantly longer setting time compared to White MTA, which may impact clinical handling efficiency. Furthermore, 5MO showed higher solubility after immersion in PBS, potentially compromising material stability and sealing effectiveness over time. Surface characterization using SEM/EDS highlighted distinct particle morphologies and compositions, while FTIR analysis further differentiated chemical bonds and hydration products between the cements. In conclusion, although 5MO exhibits promising alkalinity and elemental composition favorable for tissue regeneration, its longer setting time and higher solubility compared to White MTA may limit its clinical utility.

Keywords: Dental materials; chemical properties; calcium silicate; regenerative endodontics.

LISTA DE FIGURAS

Figura 1 (A)	Espectro para um ponto de 5MO	28
Figura 1 (B)	Espectro para um ponto de MTA Branco	28
Figura 2(A)	Fotomicrografia da amostra de 5MO em MEV	28
Figura 2 (B)	Fotomicrografia da amostra de MTA Branco em MEV	28
Figura 3	Espetro de FTIR do 5MO e MTA Branco	29

LISTA DE TABELAS

Tabela 1	Os materiais de reparo avaliados, seus respectivos fabricantes, composição química e proporções utilizadas	22
Tabela 2	Valores de pH, solubilidade e tempo de presa (média e desvio padrão) do W MTA e 5MO.....	26
Tabela 3	Composição química do 5MO e WMTA de acordo com EDX	27

LISTA DE ABREVIATURAS E SIGLAS

EDS	Espectrômetro de Energia Dispersiva
EDX	<i>Energy Dispersive X-Ray</i>
FTIR	<i>Fourier Transform - Infrared Spectroscopy</i>
MEV	Microscopia Eletrônica de Varredura
MTA	<i>Mineral Trioxide Aggregate</i>
SEM	<i>Scanning Electron Microscopy</i>
5MO	<i>Five Mineral Oxides</i>

SUMÁRIO

1	INTRODUÇÃO EXPANDIDA	15
1.1	OBJETIVO GERAL	17
2	ARTIGO	18
3	CONSIDERAÇÕES FINAIS	40
	REFERÊNCIAS	41
	APÊNDICE	46
	ANEXOS	50

1 INTRODUÇÃO EXPANDIDA

Os procedimentos de reparo são fundamentais na endodontia, pois permitem a preservação dos dentes em condições funcionais (Roig *et al.*, 2018). Para atingir esse objetivo, materiais bioativos são selecionados em procedimentos pulpares e de reparo, visando melhorar os desfechos de cicatrização e diminuir a probabilidade de extração (Primus, Tay, & Niu, 2019). No contexto endodôntico, os cimentos hidráulicos são notáveis por sua capacidade de formar apatita na interface material-dentina na presença de umidade. Um exemplo são os cimentos à base de silicato de cálcio, amplamente utilizados devido à sua biocompatibilidade e bioatividade (Estrela *et al.*, 2023).

A busca por um material capaz de induzir a regeneração e reparo de cavidades expostas começou no século passado (Al-Nalahw, Rachi, & Hasna, 2021). Durante muito tempo, o hidróxido de cálcio foi o material de escolha, com vários estudos demonstrando sua eficácia como material reparador, especialmente em relação às suas propriedades antimicrobianas e à indução da deposição de tecido mineralizado (Cvek, 1972). No entanto, cimentos biocerâmicos surgiram posteriormente, mostrando ser mais eficazes em tratamentos endodônticos devido à sua biocompatibilidade superior e excelente eficácia terapêutica (Hasna *et al.*, 2020; Darweesh *et al.*, 2020).

O agregado de trióxido mineral (MTA) é um material à base de silicato de cálcio amplamente utilizado em reparos endodônticos (Duarte *et al.*, 2018), considerado o padrão ouro pelos promissores desfechos clínicos que proporciona (Camilleri *et al.*, 2022). Este cimento biocerâmico, derivado do cimento de Portland (Torabinejad, 1993), possui em sua composição silicato dicálcico e silicato tricálcico como principais componentes. A primeira versão comercialmente disponível foi a cinza, composto basicamente de cimento Portland cinza e como radiopacificador, o óxido de bismuto. A versão branca surgiu em 2004, tendo em sua composição o cimento Portland branco com baixo teor de Ferro (Primus, C.; Tay, F. R.; Niu, L. N., 2019).

O desempenho do MTA é atribuído à sua bioatividade e capacidade de selamento, relacionada à expansão do material, à retenção de umidade e à liberação de íons hidroxila e cálcio, criando um ambiente de pH alcalino que inibe o crescimento bacteriano e facilita a formação de uma barreira mineralizada (Marciano *et al.*, 2016). Além disso, é comprovadamente não citotóxico (Campi *et al.*, 2023), biocompatível e bioativo (Delfino *et al.*, 2021; Queiroz *et al.*, 2021).

Embora as propriedades físicas, químicas e biológicas do MTA sejam amplamente estudadas e reconhecidas, ainda é necessário aprimorar sua composição para atender às características ideais de um material de reparo. Um cimento de reparo endodôntico ideal deve possuir características como estabilidade dimensional, cor adequada, radiopacidade, tempo de presa apropriado, baixa solubilidade em contato com fluidos e fluidez suficiente para um selamento eficaz. Além dessas propriedades físicas, é fundamental que o material também apresente características químicas e biológicas, como alcalinidade, liberação de íons de cálcio, bioatividade, adesão celular, biocompatibilidade e propriedades antimicrobianas. O MTA, embora apresente muitas dessas propriedades ideais, ainda tem espaço para melhorias (Santos *et al.*, 2005; Gandolf *et al.*, 2011; Gandolf *et al.*, 2012).

Em resposta a algumas limitações do MTA, novos materiais foram desenvolvidos. Por exemplo, o cimento de cinco óxidos minerais (5MO) (Golden Yatti LLC, Muscat, Oman, 2021), derivado do cimento Portland, foi reconhecido em estudos *in vitro* por ser não citotóxico e apresentar propriedades antimicrobianas. Clinicamente, o 5MO tem se mostrado eficaz como material retroativo e para o reparo de perfurações (Hasna, *et al.*, 2022). No entanto, suas propriedades físico-químicas ainda são pouco exploradas, representando uma área promissora tanto para a prática clínica quanto para a pesquisa. A literatura também não apresenta trabalhos fazendo a comparação dessas propriedades com as do MTA.

Desenvolver materiais biocompatíveis e bioativos é um avanço crucial na endodontia, oferecendo perspectivas promissoras para aplicações clínicas. Ainda assim, a adoção de novos materiais endodônticos deve ser fundamentada em estudos pré-clínicos abrangentes (Duarte *et al.*, 2018). Propriedades como solubilidade, pH, liberação de íons e tempo de presa impactam significativamente o comportamento biológico dos materiais, afetando, assim, o prognóstico clínico (Cardinali; Camilleri, 2023).

Portanto, o objetivo deste estudo foi analisar e comparar o 5MO com o MTA Branco da Angelus (descritores da empresa) em relação às suas propriedades físico-químicas, tais como pH, tempo de presa, solubilidade e caracterização de superfície. A hipótese nula estabelecida foi que não haveria diferença entre esses dois cimentos de reparo.

A busca constante por materiais que induzam a regeneração e reparo com maior eficácia continua a ser um campo ativo de pesquisa dentro da endodontia. Ao

comparar o 5MO e o MTA Branco, espera-se identificar não apenas as diferenças nas suas propriedades, mas também entender melhor como essas características influenciam os desfechos clínicos, proporcionando inovações que possam melhorar práticas endodônticas e, conseqüentemente, a saúde dental dos pacientes.

1.1 OBJETIVO GERAL

Este estudo teve como objetivo comparar as propriedades físico-químicas dos materiais 5MO e MTA Branco, com foco no pH, tempo de presa, solubilidade, composição química e caracterização de superfície.

2. ARTIGO

RESEARCH ARTICLE

Experimental study comparing the physicochemical properties and surface characterization of 5MO and White MTA

Larissa C. Novaes Batista¹, Jaqueline Martins Crivelari¹, João Vitor da Cruz Pegoraro¹, Ana Cristina Padilha Janini², Marina A. Marciano², Camila Soares Lopes¹, Bruno Martini Guimarães¹

¹ School of Dentistry, Federal University of Alfenas (Unifal-MG), Alfenas, Minas Gerais, Brazil.

² Department of Restorative Dentistry - Endodontics, Piracicaba School of Dentistry, University of Campinas (Unicamp), Piracicaba, São Paulo, Brazil

Corresponding author:

Bruno Martini Guimarães

School of Dentistry, Federal University of Alfenas (Unifal-MG), Gabriel Monteiro da Silva Street, 700 - Zip Code: 37130-000 - Alfenas - Minas Gerais - Brazil.

Phone: 55 14 99181 7474. E-mail: bruno.guimaraes@unifal-mg.edu.br

1 Artigo científico elaborado e submetido de acordo com as normas do periódico internacional Journal of Biomedical Materials Research Part B.

ABSTRACT

Repairing endodontic materials play a crucial role in maintaining dental functionality by improving healing outcomes and preventing extractions. Mineral trioxide aggregate (MTA), a calcium silicate-based cement, stands out for its bioactivity and biocompatibility, being considered the gold standard in endodontic repairs. However, new materials have been developed, such as the five mineral oxides cement (5MO). This study aimed to compare the physicochemical properties of 5MO and White MTA, focusing on pH, setting time, solubility, chemical composition, and surface characterization. The pH was analyzed at 37°C at 3, 12, 24, 72 hours, and 7, 14, 21 days, and the setting time test followed ISO 6876-2012 standard. For the solubility test, samples were weighed, stored in distilled and deionized water for 24 hours, dried, and weighed again. Solubility was calculated using the samples' weight loss (%). Surface analysis of the cements was performed by scanning electron microscopy (SEM) and energy-dispersive X-ray spectroscopy (EDS), and chemical analysis by Fourier-transform infrared spectroscopy (FTIR) (37-100°C). Data were analyzed using Shapiro-Wilk and Student's t-test ($p < 0.05$). Both materials maintained an alkaline pH throughout the study period, essential for antimicrobial activity and tissue mineralization. However, White MTA maintained higher alkalinity at 21 days, indicating potential long-term stability advantages. Setting time analysis revealed that 5MO has a significantly longer setting time compared to White MTA, which may impact clinical handling efficiency. Furthermore, 5MO showed higher solubility after immersion in PBS, potentially compromising material stability and sealing effectiveness over time. Surface characterization using SEM/EDS highlighted distinct particle morphologies and compositions, while FTIR analysis further differentiated chemical bonds and hydration products between the cements. In conclusion, although 5MO exhibits promising alkalinity and elemental composition favorable for tissue regeneration, its longer setting time and higher solubility compared to White MTA may limit its clinical utility.

Keywords: Dental materials; chemical properties; calcium silicate; Regenerative endodontics.

INTRODUCTION

Repair procedures are crucial in endodontics as they help in maintaining teeth in functional conditions⁵¹. Bioactive materials play a significant role in pulp and repair procedures in order to improve healing outcomes and reduce the need for extraction⁴⁵. Hydraulic cements are particularly notable for their ability to form apatite at the material-dentine interface in the presence of moisture⁸. Calcium silicate-based cements, for example, are commonly used in regenerative endodontic treatment due to their biocompatibility and bioactivity²⁷

Mineral Trioxide Aggregate (MTA) is a calcium silicate-based material widely used in repair procedures in endodontics²⁴, considered the gold standard repair material with promising clinical outcomes⁸. It is primarily composed of tricalcium silicate, dicalcium silicate, and a radiopacifying agent⁴⁴. The performance of MTA is attributed to its bioactivity⁸, sealing ability⁴³, expansion³², moisture retention, and release of hydroxyl and calcium ions, creating an alkaline pH that is unfavorable for bacterial growth and promotes mineralized barrier formation in adjacent tissues⁴². While MTA (WMTA) has been extensively studied for its physical, chemical, and biological properties over the years, there is ongoing research to further enhance its characteristics as an ideal repair material^{53,31,33}.

An ideal endodontic repair cement should possess physical characteristics such as dimensional stability, color^{11,41,26}, radiopacity³⁷, suitable setting time, resistance to solubility^{29,16}, flow for proper sealing^{25,26}, as well as chemical and biological properties including alkalinity, calcium ion release²³, bioactivity³⁴, cellular adhesion⁶, biocompatibility^{35,9}, and antimicrobial properties⁵⁶. WMTA demonstrates many of these ideal properties, there is still room for improvement⁴⁴.

New materials such as the Five Mineral Oxides cement (5MO), derived from Portland cement¹, have shown promise in in vitro studies as a non-cytotoxic material with antimicrobial properties^{1,2}. In clinical applications, 5MO has proven effective as a retrofilling material²⁸ and repair material for perforations^{5,3}. Although the physical-chemical properties of 5MO are still being explored, it represents a viable bioceramic repair material option for both clinical practice and research purposes. The literature also does not present works comparing these properties with those of MTA.

The development of biocompatible and bioactive materials in Endodontics signifies a significant advancement with promising prospects for clinical use²⁴. However, careful consideration and prior studies are essential in selecting a new endodontic material based on physical-chemical properties, which can influence its biological behavior and clinical prognosis¹⁴. The aim of this study was to analyze and compare 5MO with WMTA in terms of their physical-chemical properties including pH, setting time, solubility, and surface characterization, with the null hypothesis being that there would be no difference between these two repair cements.

MATERIALS AND METHODS

The materials used in the study were the WMTA (Angelus, Londrina, Paraná, Brazil) and 5MO (GOLDEN YATTI LLC, MUSCAT, OMAN). The preparation of WMTA was done using 0,145g of powder (1 spoon) to one drop of liquid. The cements was mixed in a glass plate using a metallic spatula for 40 seconds to obtain a homogeneous consistency, as recommended by the manufacturer. For 5 MO, was used the ratio 3:1 (powder: water) and mixed for 30 seconds. The root canal sealers were mixed in accordance with the instructions provided by the manufacturers (Table 1).

Table 1- The repair materials evaluated, their respective manufacturers, chemical composition and proportions utilized.

	Manufacturers	Composition	Proportions
5MO	Golden Yatt LLC Registration N° 31211591	Powder: Calcium oxide, silicate oxide, titanium oxide, aluminum oxide, and magnesium oxide. Liquid: distilled water	1g powder / 0.33ml distilled water
	Angelus Indústria de Produtos Odontológicos S/A. CNPJ 00.257.992/0001- 37.	Powder: Tricalcium silicate, dicalcium silicate, tricalcium aluminate, calcium oxide, calcium tungstate Liquid: distilled water.	0.145g powder/ 0.25 ml distilled water

Physicochemical properties

pH

The pH of the cements was determined after 3, 12, 24, 72 hours, 7, 14, 21 days. 10 samples from each group were used, in accordance with other studies found in the literature. The samples were prepared using polyethylene tubes (10 x 1 mm) filled by the materials WMTA and 5MO. Each tube was immersed in plastic containers with 10

ml of distilled water and then stored at 37°C with a relative humidity of 95%. At each period, the tubes were removed from the plastic container and placed in a new one with 10 mL of distilled water. The pH analysis was performed by using the previously calibrated Ultrabasic pH metre (Denver Instrument Company, Arvada, Colorado, USA)¹⁹.

Setting time

Setting time was determined by using microgranulated plaster molds (Durone-IV; Dentsply, Petrópolis, Rio de Janeiro, Brazil) that were previously manufactured (10 x 1mm) and immersed in distilled water for 24 hours before testing. The sample consisted of 6 elements from each group, also following examples from the literature. The plaster molds were filled with the sealers WMTA and 5MO after manipulation. Periodically, a 100 ± 0.5 g Gilmore needle with a diameter of 2 ± 0.1 mm was placed vertically on the surface of the sample to determine the setting time according to ISO 6876:2012. Throughout the analysis, the materials were kept in an oven, and the needle was cleaned between analyses. Setting times were determined as the period between manipulation and the moment when the needle no longer produced marks on the surface of the cements¹³.

Solubility

The sample was also composed of 6 elements from each group, according the literature. Circular molds measuring 1.5 mm in height and 7.75 mm in internal diameter were made¹⁵ and filled with the materials and with a nylon thread included in the mass cement. The samples were stored in an oven at a temperature of 37°C for a period of time three times the setting time of each material. The specimens were weighed on an HM-200 precision balance (A & D Engineering, Inc., Bradford, MA) to obtain their initial mass. The specimens were weighed on an HM-200 precision balance (A & D Engineering, Inc., Bradford, MA) to obtain their initial mass and suspended using nylon threads inside plastic containers with lids containing 7.5 mL phosphate-buffered saline solution (PBS), and kept in an oven at 37°C for 7 days. After these periods, the specimens were removed from the solution and placed in a desiccator. The final mass was measured every 24 hours until the mass stabilized. Mass loss was expressed as a percentage of the original mass.

Surface characterization

Scanning Electron Microscopy/Energy Dispersive X-Ray (SEM/EDX)

For surface characterization, Scanning Electron Microscopy (SEM) analysis coupled to the Energy Dispersive Spectrometer (EDS - Energy Dispersive System) was used. Three samples of each cement (10mm diameter x 1mm thick) were prepared and after setting time at 37°C and 95% humidity, each sample was carbon-coated separately, using double-sided carbon conductive tape. These samples were placed on a platinum SEM plate and the assembly was placed in the hood of the Emitech K450 metallizer for 1 minute and 30 seconds under a current of 50 mA. In this step, a thin layer of conductive element, in this case carbon, was deposited on the surface so that the electrons could be conducted. Then, the samples were taken to the Scanning Electron Microscope (SEM), which had an energy dispersive spectrometer (EDS) attached for semi-quantitative analysis. The beam energy was maintained at 20 kV and the beam current reached the samples with values of 6000 pA, as needed to adjust the brightness/contrast and quality (counts) of the EDS analyzes⁵⁴. A magnification of 1000 times was performed.

FOURIER-TRANSFORM INFRARED SPECTROSCOPY (FTIR)

FTIR spectra were obtained using potassium bromide (KBr) pellets with 0.05 g of each material and 0.1 g of KBr. The mixture was immediately transferred to a 13 mm diameter pressing die, where it was placed under vacuum in a 10-ton RIIK ring pressing machine for 1 min. Spectra were obtained using a calibrated FT-IR spectrometer (Vertex 70v; Bruker, Billerica, MA, USA) operating in normal transmittance mode, spectral resolution of 4 cm⁻¹ and range of 400 to 4000 cm⁻¹ under vacuum. FTIR spectral data does not require signal processing⁴⁷. The sample number was 3 elements for each group of cements.

Statistical analysis

All data was analyzed with GraphPad Prism 9.02 (GraphPad Software, Inc., CA, USA) statistical program ($\alpha = 0.05$). The normal distribution of these data was confirmed using the Shapiro-Wilk normality test and the physicochemical properties were submitted to Student's t test.

RESULTS

In all time periods, both WMTA and 5MO promoted an alkaline pH. At 21 days, WMTA was significantly more alkaline than 5MO ($p=0.004$), demonstrating greater stability over time; in other periods, there was no significant difference between the cements ($p>0.05$).

According to table 2, both repair materials exhibited mass loss after immersion in PBS. WMTA had lower mass loss than 5MO ($p = 0.0107$). Regarding setting time values, there was no difference between the cements, with 5MO demonstrating the longest setting time ($p < 0.0001$).

Table 2 – pH, solubility and setting time values (mean and standard deviation) of W MTA and 5MO.

	pH values							Solubility (% mass loss)	Setting Time (minutes)
	3 hours	12 hours	24 hours	72 hours	7 days	14 days	21 days		
W MTA	10.96±0.44 ^a	10.73±0.49 ^a	10.46±0.43 ^a	10.54±0.57 ^a	9.6±0.54 ^a	8.85±0.75 ^a	9.50 ±0.8 ^a	4.04±1.23 ^b	51.02±3.94 ^b
5MO	10.56±0.67 ^a	10.60±0.25 ^a	10.53±0.39 ^a	10.45±0.58 ^a	9.2±0.67 ^a	8.75±0.59 ^a	8.6±0.3 ^b	6.02±1.46 ^a	70.76±2.93 ^a

Different letters on the same column represent a significant difference between **materials** ($p < 0.05$).

In the analysis of cements using Energy Dispersive Spectroscopy (EDS), the Figure 1 (A) shows the spectrum for 5MO sample, showing that this material is primarily composed of carbon, oxygen, calcium, and silicon, along with smaller amounts of strontium, barium, aluminum, titanium, bismuth, sulfur, magnesium, and iron. In contrast, in Figure 1 (B), the spectrum for WMTA shows that this cement is predominantly composed of oxygen, carbon, calcium, and tungsten, but also contains smaller quantities of silicon, strontium, and aluminum. The presence of magnesium, sulfur, titanium, iron, barium, and bismuth in 5MO, as well as the absence of tungsten, makes the composition of this cement different from WMTA. In the Table 3, which represents the chemical composition of both materials, it is possible to observe that similarity occurs only in the presence of carbon, oxygen, aluminum, silicon, calcium, and strontium in both cements.

Table 3 – Chemical Composition of 5MO and W MTA according to EDX

Elemento	%5MO	%WMTA
C	50,13	19,87
O	36,87	39,79
Mg	0,09	
Al	0,74	0,93
Si	3,93	35
S	0,19	
Ca	5,14	20,67
Ti	0,24	
Fe	0,06	
Sr	1,49	2,27
Ba	0,92	
Bi	0,19	
W		13,14

Image captured by Scanning Electron Microscopy (SEM) observed in Figure 2 (A) reveal that 5MO exhibits an irregular surface with small, lighter-colored particles prominently visible. In contrast, WMTA in Figure 2 (B) shows a surface composed of particles of various sizes, more elongated, with white spots among a grayish coloration.

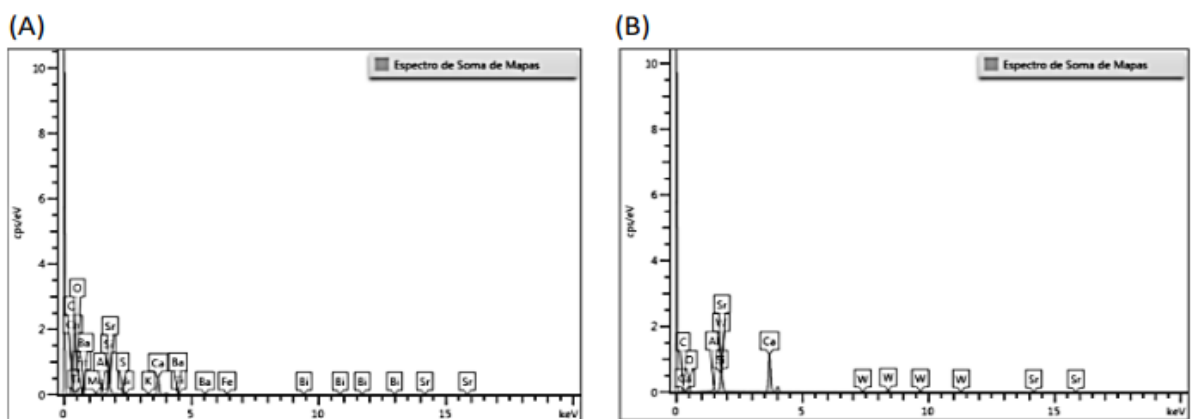


Figure 1: EDS Spectrum. (A) 5MO Sample; (B) WMTA Sample

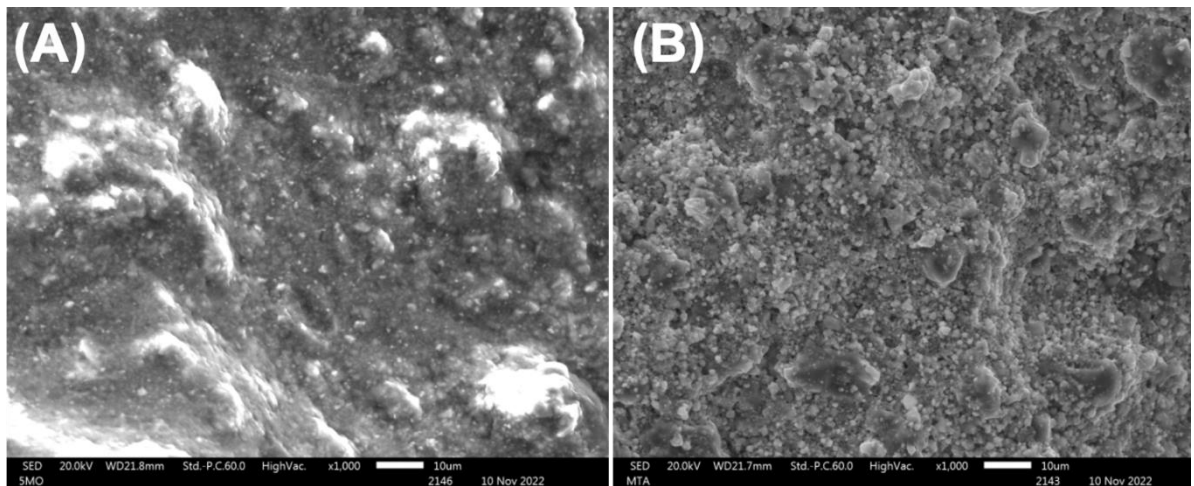


Figure 2: Scanning electron microscope photomicrograph at 1000x magnification. (A) 5MO sample; (B) WMTA sample.

The figure 3 displays FTIR spectra for WMTA and 5MO. An absorption band at 1400 cm^{-1} related to the C-O group was observed. The band at 3200 cm^{-1} corresponds to the C-H group, which is prominent in hydrated materials. Furthermore, a significant peak ranging from 2750 to 3250 cm^{-1} , attributed to the O-H group present

in the cement composition, was noted. Bands at 750 and 1150 cm^{-1} were associated. The 5MO graph presents the same peaks as that of MTA but with more noise, which may be associated with the impurity of the formulation.

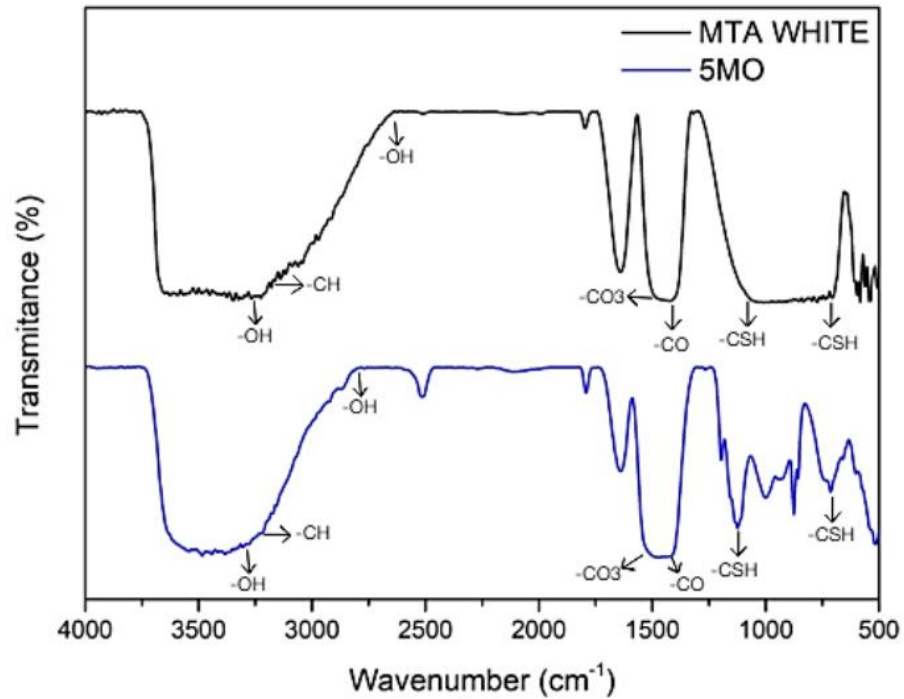


Figure 3: FTIR spectra of 5MO and WMTA.

DISCUSSION

The current study evaluated the physicochemical, morphological structure, and chemical composition properties of 5MO compared to WMTA. Significant differences were found in the physicochemical properties of the materials, leading to the rejection of the null hypothesis. 5MO exhibited a longer setting time and higher solubility, but lower alkalinity after 21 days.

The release of hydroxyl and calcium ions results in the alkaline pH of the medium. The composition, proportion of silicates, and particle sizes have a significant influence on the hydration process of the material and the release of calcium hydroxide. During the hydration of calcium silicate and calcium oxide¹², the synthesis of calcium hydroxide occurs, with a continuous release of calcium ions and hydroxyl ions²⁷. WMTA contains calcium silicates and calcium oxide in its composition, while 5MO cement only contains oxides in its formulation. This could explain the significant decrease in alkalinity of the medium after 21 days compared to MTA.

Throughout all periods, both materials maintained an alkaline pH in the medium, which plays a significant role in the antibacterial activity and osteogenic potential of the materials²⁷. This alkaline environment creates favorable conditions for tissue regeneration and infection prevention, crucial characteristics in endodontics¹³. WMTA initially raised the pH of the medium, which then varied between 10.96 and 8.85, consistent with findings from previous studies^{13,19}.

In this study, 5MO demonstrated a longer setting time and greater mass loss compared to other related studies on setting time and solubility of calcium silicate-based endodontic materials⁴⁹. The significant mass loss observed in the 5MO material can be attributed to the presence of calcium oxide in its composition, which contributes to its high solubility^{58,7} similar to materials containing calcium hydroxide⁵⁸.

Both repair materials exhibited mass loss after being immersed in PBS, with a solubility exceeding the recommended 3% according to ISO 6876:2012 standards. Another study also reported mass loss for MTA White¹³. Materials with extended setting times are more prone to dissolution during endodontic procedures²⁰ and those with high solubility may lead to inadequate sealing and the presence of gaps in the filling¹⁶, potentially causing reinfection and compromising the prognosis.

The liquid utilized for immersion can interact with the material, potentially impacting the results obtained in solubility tests⁵². The cements utilized in this study are hydrophilic and rely on humidity to set²⁷. Consequently, the solubility methodology outlined by Carvalho-Júnior¹⁵ was adopted, with PBS selected as the immersion medium as it closely mimics physiological conditions⁵⁷.

Chemical analysis and characterization of different materials were conducted using a combination of SEM/EDX and FTIR analyses. In this study, scanning electron micrographs of WMTA revealed a more uniform and homogeneous surface compared to 5MO. While there are no existing studies in the literature comparing these specific materials, other studies employing similar methodologies have noted that WMTA exhibits multiple aggregates of large, round particles with an elongated shape^{17,40}. The size and distribution of particles in the composition of endodontic materials can significantly impact their characteristics⁴⁰; specifically, larger particles tend to have excellent hydration capability¹². At 5MO the particles showed more evident this could be related to the high solubility and setting time of this material observed in the present study.

Rocha et al.⁵⁰ analyzed the FTIR spectra of MTA Angelus and identified absorption bands at 660, 896, and 1410 cm^{-1} associated with C-O. In the present study, absorption bands at 1400 cm^{-1} were observed for "WMTA" and "5MO". Abu Zeid et al.⁴ demonstrated bands at 2800-2900 cm^{-1} related to the C-H group, which were also evident at 3200 cm^{-1} in both materials analyzed in this study. Following material setting, the formation of CO₃ resulted in peaks at 1440 and 1472 cm^{-1} , as observed at 1600 cm^{-1} in this study. Bands at 449, 524, and 996 cm^{-1} indicated the presence of hydrated calcium silicate in WMTA which were detected at 750 and 1150 cm^{-1} in the sample examined in this study. Furthermore, Mahmoud et al.⁴⁰ identified a broad peak between 3000-3600 cm^{-1} attributed to the water O-H group in fully set materials for MTA Angelus, suggesting the formation of hydrated phases such as calcium hydroxide and hydrated calcium silicate as reaction products. In this study, significant peaks of this O-H group were observed at 2750 and 3250 cm^{-1} .

Analyzing aspects of Scanning Electron Microscopy (SEM) coupled with Energy Dispersive Spectrometer (EDS), Camilleri et al.¹⁰ found that "WMTA" is composed of silicon, calcium, and oxygen, with the latter two being more concentrated. Hasna¹ demonstrated in their study the presence of titanium, sulfur, potassium, and the

absence of tungsten in "5MO". Furthermore, according to Sarzeda et al.⁵⁴, calcium and oxygen elements form calcium oxide, which subsequently transforms into calcium hydroxide, enabling these repair materials to effectively induce remineralization. The chemical composition data from previous studies are also observed in this work, where White MTA has 39.79% oxygen and 20.67% calcium, consistent with the aforementioned authors. Additionally, comparing White MTA and 5MO cements, it was found that both contain carbon, oxygen, aluminum, silicon, calcium, and strontium. However, it was noted that WMTA also contains tungsten, probably related to its radiopacifier, while 5MO contains titanium, iron, barium, and bismuth. It was also observed that White MTA has a high percentage of calcium in its composition. In 5MO, calcium is present in smaller quantities, with carbon standing out at 50.13% in its composition.

5MO exhibited an alkaline pH and the presence of calcium and oxygen ions, which are crucial for antimicrobial activity and for inducing the formation of mineralized tissue during repair¹. However, in the current study, this material displayed higher mass loss and setting time compared to WMTA indicating potential drawbacks that could hinder its clinical utility. Surface characterization and FTIR tests show that 5MO appears to lack purity in its formulation, which may lead to the aforementioned disadvantages.

CONCLUSION

In conclusion, this study comprehensively evaluated and compared the physicochemical characteristics of 5MO and WMTA as potential endodontic repair materials. Substantial variations were observed between the two cements in several parameters, contradicting the initial hypothesis. Although 5MO presents favorable properties such as high pH and satisfactory repair elements, the lack of purity in its formulation contradicts the advances that MTA has undergone.

REFERENCES

1. Roig M, Espona J, Mercadé M., Duran-Sindreu F. Horizontal root fracture treated with MTA, a case report with a 10-year follow-up. *Dental Traumatol*. 2011; **27**(6): 460-3. doi: [10.1111/j.1600-9657.2011.01018.x](https://doi.org/10.1111/j.1600-9657.2011.01018.x)
2. Primus C, Tay FR, Niu LN. Bioactive Tri/dicalcium Silicate Cements for Treatment of Pulpal and Periapical Tissues. *Acta Biomater*. 2019; **96**: 35-54. doi: [10.1016/j.actbio.2019.05.050](https://doi.org/10.1016/j.actbio.2019.05.050)
3. Camilleri J, Atmeh A, Li X, Meschi N. Present status and future directions: Hydraulic materials for endodontic use. *Int Endod J*. 2022; **55**(S3): 710 – 77. doi: [10.1111/iej.13709](https://doi.org/10.1111/iej.13709)
4. Estrela C, et al. Mechanism of action of Bioactive Endodontic Materials. *Braz Dent J*. 2023; **34**(1):1-11. doi: [10.1590/0103-6440202305278](https://doi.org/10.1590/0103-6440202305278)
5. Duarte MAH, et al. Tricalcium silicate-based cements: properties and modifications. *Braz Oral Res*. 2018; **32**(suppl 1): e70. doi: [10.1590/1807-3107bor-2018.vol32.0070](https://doi.org/10.1590/1807-3107bor-2018.vol32.0070)
6. Parirokh M, Torabinejad M. Mineral Trioxide Aggregate: A Comprehensive Literature Review-Part I: Chemical, Physical, and Antibacterial Properties. *J Endod*. 2010; **36**: 16 - 27. doi: [10.1016/j.joen.2009.09.006](https://doi.org/10.1016/j.joen.2009.09.006)
7. Medeiros PL, et al. Sealing ability of MTA, CPM, and MBPc as root-end filling materials: a bacterial leakage study. *J Appl Oral Sci*. 2016; **24**: 148 - 52. doi: [10.1590/1678-775720130103](https://doi.org/10.1590/1678-775720130103)
8. Gandolfi MG, et al. Setting time and expansion in different soaking media of experimental accelerated calcium-silicate cements and ProRoot MTA. *Oral Surg Oral Med Oral Pathol Oral Radiol Endod*. 2009; **108**: e39- 45. doi: [10.1016/j.tripleo.2009.07.039](https://doi.org/10.1016/j.tripleo.2009.07.039)
9. Marciano MA, et al. Physical and Chemical Properties and Subcutaneous Implantation of Mineral Trioxide Aggregate Mixed with Propylene Glycol. *J Endod*. 2016; **42**(3): 474-9. doi: [10.1016/j.joen.2015.10.014](https://doi.org/10.1016/j.joen.2015.10.014)
10. Santos AD, et al. Physico-chemical properties of MTA and a novel experimental cement. *Int Endod J*. 2005; **38**(7): 443-7. doi: [10.1111/j.1365-2591.2005.00963.x](https://doi.org/10.1111/j.1365-2591.2005.00963.x)
11. Gandolfi MG, et al. Development of the foremost light-curable calcium-silicate MTA cement as root-end in oral surgery. Chemical-physical properties,

- bioactivity and biological behavior. *Dental Materials*. 2011; **27**(7): e134-57. doi: [10.3390/ijms232213914](https://doi.org/10.3390/ijms232213914)
12. Gandolfi MG, Siboni F, Prati C. Chemical-physical properties of TheraCal, a novel light-curable MTA-like material for pulp capping. *International Journal of Endodontics*. 2012; **45**(6): 571-79. doi: [10.1111/j.1365-2591.2012.02013.x](https://doi.org/10.1111/j.1365-2591.2012.02013.x)
 13. Camilleri J, Mallia B. Evaluation of the dimensional changes of mineral trioxide aggregate sealer. *International Journal of Endodontics*. 2011; **44**(5): 416-24. doi: [10.1111/j.1365-2591.2010.01844.x](https://doi.org/10.1111/j.1365-2591.2010.01844.x)
 14. Marciano MA, et al. Assessment of color stability of white MTA Angelus and bismuth oxide in contact with tooth structure. *Journal of Endodontics*. 2014; **40**(8): 1235-40. doi: [10.1016/j.joen.2014.01.044](https://doi.org/10.1016/j.joen.2014.01.044)
 15. Duque JA, et al. The effect of mixing method on tricalcium silicate-based cement. *International Journal of Endodontics*. 2018; 51(1): 69-78. doi: [10.1111/iej.12774](https://doi.org/10.1111/iej.12774)
 16. Islam I, Chng HK, Yap AUJ. Comparison of the physical and mechanical properties of MTA and Portland cement. *Journal of Endodontics*. 2006; **32**(3): 193-97. doi: [10.1016/j.joen.2005.10.043](https://doi.org/10.1016/j.joen.2005.10.043)
 17. Fridland M, Rosado R. Mineral trioxide aggregate (MTA) solubility and porosity with different water-to-powder ratios. *Journal of Endodontics*. 2003; 29(12): 814-17. doi: [10.1097/00004770-200312000-00007](https://doi.org/10.1097/00004770-200312000-00007)
 18. Cavenago BC, et al. Influence of powder-to-water ratio on radiopacity, setting time, pH, calcium ion release and a micro-CT volumetric solubility of white mineral trioxide aggregate. *Int Endod J*. 2014; **47**(2):120–126. doi: [10.1111/iej.12120](https://doi.org/10.1111/iej.12120)
 19. Duarte MAH, et al. Evaluation of the propylene glycol association on some physical and chemical properties of mineral trioxide aggregate. *International Journal of Endodontics*. 2012; **45**(6): 565-70. doi: [10.1111/j.1365-2591.2012.02012.x](https://doi.org/10.1111/j.1365-2591.2012.02012.x)
 20. Duarte MAH, et al. pH and calcium ion release of 2 root-end filling materials. *Oral Surgery, Oral Medicine, Oral Pathology, Oral Radiology and Endodontology*. 2003; **95**(3): 345-47. doi: [10.1067/moe.2003.12](https://doi.org/10.1067/moe.2003.12)
 21. Gandolfi MG, Taddei P, Tinti A, Prati C. Apatite-forming ability (bioactivity) of ProRoot MTA. *International Journal of Endodontics*. 2010; **43**(10): 917-29. doi: [10.1111/j.1365-2591.2010.01768.x](https://doi.org/10.1111/j.1365-2591.2010.01768.x)

22. Balto HA. Attachment and morphological behavior of human periodontal ligament fibroblasts to mineral trioxide aggregate: a scanning electron microscope study. *Journal of endodontics*. 2004; 30(1): 25-29. doi: [10.1097/00004770-200401000-00005](https://doi.org/10.1097/00004770-200401000-00005)
23. Holland R, et al. Reaction of rat connective tissue to implanted dentin tubes filled with a 30 white mineral trioxide aggregate. *Brazilian Dental Journal*. 2002; **12**(1): 3-8. PMID: 11870957
24. Camilleri J, et al. Biocompatibility of two commercial forms of mineral trioxide aggregate. *International Journal of Endodontics*. 2004; 37(10): 699-704. doi: [10.1111/j.1365-2591.2004.00859.x](https://doi.org/10.1111/j.1365-2591.2004.00859.x)
25. Tanomaru-Filho M, et al. Radiopacity Evaluation of New Root Canal Filling Materials by Digitalization of Images. *Journal of endodontics*. 2007; **33**: 249-51. doi: [10.1016/j.joen.2006.08.015](https://doi.org/10.1016/j.joen.2006.08.015)
26. Gandolfi MG, et al. Calcium silicate and calcium hydroxide materials for pulp capping: biointeractivity, porosity, solubility and bioactivity of current formulations. *Journal of Applied Biomaterials and Functional Materials*. 2015; **13**(1): 43-60. doi: [10.5301/jabfm.5000201](https://doi.org/10.5301/jabfm.5000201)
27. Cintra LTA, et al. Cytotoxicity, biocompatibility, and biomineralization of the new high-plasticity mta material. *J Endod*. 2017; **43**(5):774-778. doi: [10.1016/j.joen.2016.12.018](https://doi.org/10.1016/j.joen.2016.12.018)
28. Silva EJNL, et al. Push-out Bond Strength of Fast-setting Mineral Trioxide Aggregate and Pozzolan-based Cements: ENDOCEM MTA and ENDOCEM Zr. *J Endod*. 2017; **43**(5):801-804. doi: [10.1016/j.joen.2016.12.007](https://doi.org/10.1016/j.joen.2016.12.007)
29. Abu Hasna A, et al. Biological and chemical properties of five mineral oxides and of mineral trioxide aggregate repair high plasticity: an in vitro study. *Sci Rep*. 2022; **12**(1): 14123. doi: [10.1038/s41598-022-17854-0](https://doi.org/10.1038/s41598-022-17854-0)
30. Abu Hasna A, et al. Antimicrobial Action, Genotoxicity, and Morphological Analysis of Three Calcium Silicate-Based Cements. *Biomed Res Int*. 2022; **2022**: 1-7. doi: [10.1155/2022/2155226](https://doi.org/10.1155/2022/2155226)
31. Flores Orozco EI, et al. Case Report: Interdisciplinary management of a complex odontoma with a periapical involvement of superior anterior teeth. *F1000Res*. 2019; **8**:1531. doi: [10.12688/f1000research.20337.1](https://doi.org/10.12688/f1000research.20337.1)
32. Al-Nahlawi T., Ala Rachi M., Abu H. A. Endodontic perforation closure by five mineral oxides silicate-based cement with/without collagen sponge

- matrix. *International Journal of Dentistry*. 2021; **2021**:8. doi: [10.1155/2021/4683689](https://doi.org/10.1155/2021/4683689)
33. Abu Hasna A., et al. Apicoectomy of perforated root canal using bioceramic cement and photodynamic therapy. *Journal of Dentistry*. 2020; **2020**:1. doi: [10.1155/2020/6677588](https://doi.org/10.1155/2020/6677588)
34. Cardinali F, Camilleri J. A critical review of the material properties guiding the clinician's choice of root canal sealers. *Clin Oral Investig* 2023; **27**(8):4147-55. doi: [10.1007/s00784-023-05140-w](https://doi.org/10.1007/s00784-023-05140-w)
35. Coaguila – Llerena H, et al. Physicochemical properties of a bioceramic repair material BioMTA. *Brazilian Dental Journal*. 2020; **31**: 511-515. doi: [10.1590/0103-6440202003163](https://doi.org/10.1590/0103-6440202003163)
36. Campi LB, et al. Physicochemical properties, cytotoxicity and bioactivity of a ready-to-use bioceramic repair material. *Brazilian dental jornal*. 2023; **34**: 29-38. doi: [10.1590/0103-6440202304974](https://doi.org/10.1590/0103-6440202304974)
37. Carvalho Junior J, et al. Solubility and Dimensional Change after Setting of Roof Canal Sealers: A Proposal for Smaller Dimensions of Test Samples. *Journal of Endodontics*. 2007, 33(9): 1110-16. doi: [10.1016/j.joen.2007.06.004](https://doi.org/10.1016/j.joen.2007.06.004)
38. Sarzeda GDR, et al. Análise da composição química dos cimentos MTA Angelus branco, cinza e HP Repair através de Microscopia Eletrônica de Varredura (MEV) acoplada a Espectrômetro de Energia Dispersiva (EDS). *Revista de Odontologia UNESP*. 2019; **48**: e20190093. doi: [10.1590/1807-2577.09319](https://doi.org/10.1590/1807-2577.09319)
39. Qiu L, Hurt AP, Coleman NJ. The Application of ²⁹Si NMR Spectroscopy to the Analysis of Calcium Silicate-Based Cement using Biodentine as an Example. *Journal of Functional Biomaterials*. 2019; **10**(2): 25. doi: [10.3390/jfb10020025](https://doi.org/10.3390/jfb10020025)
40. Kato G, et al. Ex Vivo Osteogenesis Induced by Calcium Silicate-Based Cement Extracts. *J Funct Biomater*. 2023; **14**(6):314. doi: [10.3390/jfb14060314](https://doi.org/10.3390/jfb14060314)
41. Camilleri J, Sorrentino F, Damidot D. Investigation of the hydration and bioactivity of radiopacified tricalcium silicate cement, Biodentine and MTA Angelus. *Dent Mater*. 2013; **29**(5):580-93. doi: [10.1016/j.dental.2013.03.007](https://doi.org/10.1016/j.dental.2013.03.007)
42. Queiroz MB, et al. Development and evaluation of reparative tricalcium silicate-ZrO₂ -Biosilicate composites. *J Biomed Mater Res B Appl Biomater*. 2021; **109**(4):468-476. doi: [10.1002/jbm.b.34714](https://doi.org/10.1002/jbm.b.34714)

43. Vivan RR, et al. Evaluation of the physical and chemical properties of two commercial and three experimental root-end filling materials. *Oral Surg Oral Med Oral Pathol Oral Radiol Endod.* 2010; **110**(2):250-6. doi: [10.1016/j.tripleo.2010.04.021](https://doi.org/10.1016/j.tripleo.2010.04.021)
44. Bosso-Martelo R, et al. Physicochemical properties of calcium silicate cements associated with microparticulate and nanoparticulate radiopacifiers. *Clin Oral Investig.* 2016; **20**(1):83-90. doi: [10.1007/s00784-015-1483-7](https://doi.org/10.1007/s00784-015-1483-7)
45. Húngaro Duarte MA, et al. Effect of different radiopacifying agents on the physicochemical properties of white Portland cement and white mineral trioxide aggregate. *J Endod.* 2012; **38**:394–397. doi: [10.1016/j.joen.2011.11.005](https://doi.org/10.1016/j.joen.2011.11.005)
46. Liu WN, Chang J, Zhu YQ, Zhang M. Effect of tricalcium aluminate on the properties of tricalcium silicate-tricalcium aluminate mixtures: setting time, mechanical strength and biocompatibility. *Int Endod J.* 2011; **44**(1):41-50. doi: [10.1111/j.1365-2591.2010.01793.x](https://doi.org/10.1111/j.1365-2591.2010.01793.x)
47. Collares FM, et al. Influence of radiopaque fillers on physicochemical properties of a model epoxy resin-based root canal sealer. *J Appl Oral Sci.* 2013; **21**(6):533–539. doi: [10.1590/1679-775720130334](https://doi.org/10.1590/1679-775720130334)
48. Rosatto CMP, et al. Physicochemical properties and osteoclastogenesis for three premixed calcium silicate-based sealers post set. *Braz Oral Res.* 2022; **36**:e065. doi: [10.1590/1807-3107BOR-2017.vol31.0061](https://doi.org/10.1590/1807-3107BOR-2017.vol31.0061)
49. Torres FFE, et al. Effect of immersion in distilled water or phosphate-buffered saline on the solubility, volumetric change and presence of voids within new calcium silicate-based root canal sealers. *Int Endod J.* 2020; **53**(3):385-391. doi: [10.1590/1807-3107bor-2021.vol35.0028](https://doi.org/10.1590/1807-3107bor-2021.vol35.0028)
50. Chang SW. Chemical Composition and Porosity Characteristics of Various Calcium Silicate-Based Endodontic Cements. *Bioinorg Chem Appl.* 2018; **2018**:2784632. doi: [10.1155/2018/2784632](https://doi.org/10.1155/2018/2784632)
51. Mahmoud O, et al. Morphological and Chemical Analysis of Different Types of Calcium Silicate-Based Cements. *International Journal of Dentistry.* 2022; **2022**: 1-16. doi: [10.1155/2022/6480047](https://doi.org/10.1155/2022/6480047)
52. Rocha AC, et al. Physicochemical analysis of MTA Angelus® and Biodentine® conducted with X ray diffraction, dispersive energy spectrometry, X ray fluorescence, scanning electron microscope and infrared spectroscopy.

- Revista Odontológica Mexicana*. 2015; **19** (3): e170-176. doi: [10.1016/j.rodex.2016.02.023](https://doi.org/10.1016/j.rodex.2016.02.023)
53. Abu Zeid ST, et al. Chemistry and bioactivity of NeoMTA Plus™ versus MTA Angelus® root repair materials. *Journal of Spectroscopy*. 2017, **2017**: 1-9. doi: [10.1155/2017/8736428](https://doi.org/10.1155/2017/8736428)
54. Camilleri J, et al. The constitution of mineral trioxide aggregate. *Dental Material*. 2005; **21**:(4): 297-303. doi: [10.1016/j.dental.2004.05.010](https://doi.org/10.1016/j.dental.2004.05.010)

3 CONSIDERAÇÕES FINAIS

Com base nos dados obtidos na comparação entre o MTA Branco e o 5MO, é evidente que ambos os materiais possuem propriedades distintas que podem impactar sua efetividade e estabilidade a longo prazo.

O MTA Branco demonstrou manter uma alcalinidade superior após 21 dias, sugerindo potencialmente uma maior durabilidade ao longo do tempo. Além disso, apresentou um tempo de presa significativamente mais curto em comparação com o 5MO, o que pode facilitar o manuseio clínico e a eficiência do tratamento.

Por outro lado, o 5MO exibiu uma alcalinidade promissora e uma composição elemental favorável à regeneração tecidual. No entanto, seu tempo de presa mais prolongado e maior solubilidade após imersão em PBS podem comprometer sua estabilidade e eficácia de selamento em longo prazo.

REFERÊNCIAS

- ABU HASNA, A. *et al.* Antimicrobial action, genotoxicity, and morphological analysis of three calcium silicate-based cements. **BioMed Research International**, [S.l.], v. 2022, artigo 2155226, maio de 2022.
- ABU HASNA, A. *et al.* Apicoectomy of perforated root canal using bioceramic cement and photodynamic therapy. **International Journal of Dentistry**, [S.l.] v. 2020, artigo 6677588, dezembro de 2020.
- ABU HASNA, A. *et al.* Biological and chemical properties of five mineral oxides and of mineral trioxide aggregate repair high plasticity: an in vitro study. **Scientific Reports**, [S.l.] v. 12, n. 1, artigo 14123, agosto de 2022.
- ABU ZEID, S. T. *et al.* Chemistry and Bioactivity of NeoMTA Plus™ versus MTA Angelus® Root Repair Materials. **Journal of Spectroscopy**, [S.l.] v. 2017, p. 1-9, outubro de 2017.
- AL-NAHLAWI, T.; ALA RACHI, M.; ABU HASNA, A. Endodontic perforation closure by five mineral oxides silicate-based cement with/without collagen sponge matrix. **International Journal of Dentistry**, [S.l.] v. 2021, artigo 4683689, setembro de 2021.
- BALTO, H. A. Attachment and morphological behavior of human periodontal ligament fibroblasts to mineral trioxide aggregate: a scanning electron microscope study. **Journal of Endodontics**, [S.l.] v. 30, n. 1, p. 25-29, janeiro de 2004.
- BOSSO-MARTELO, R. *et al.* Physicochemical properties of calcium silicate cements associated with microparticulate and nanoparticulate radiopacifiers. **Clinical Oral Investigations**, [S.l.] v. 20, n. 1, p. 83-90, janeiro de 2016.
- CAMILLERI, J. *et al.* Biocompatibility of two commercial forms of mineral trioxide aggregate. **International Endodontic Journal**, [S.l.] v. 37, n. 10, p. 699-704, outubro de 2004.
- CAMILLERI, J. *et al.* The constitution of mineral trioxide aggregate. **Dental Materials**, [S.l.] v. 21, n. 4, p. 297-303, abril de 2005.
- CAMILLERI, J.; ATMEH, A.; LI, X.; MESCHI, N. Present Status and Future Directions: Hydraulic Materials for Endodontic Use. **International Endodontic Journal**, [S.l.] v. 55, n. S3, p. 710-77, maio de 2022.
- CAMILLERI, J.; MALLIA, B. Evaluation of the dimensional changes of mineral trioxide aggregate sealer. **International Endodontic Journal**, [S.l.] v. 44, n. 5, p. 416-424, maio de 2011.
- CAMILLERI, J.; SORRENTINO, F.; DAMIDOT, D. Investigation of the hydration and bioactivity of radiopacified tricalcium silicate cement, Biodentine and MTA Angelus. **Dental Materials**, [S.l.] v. 29, n. 5, p. 580-593, maio de 2013.

CAMPI, L. B. *et al.* Physicochemical properties, cytotoxicity and bioactivity of a ready-to-use bioceramic repair material. **Brazilian Dental Journal**, [S.l.] v. 34, n. 1, p. 29-38, janeiro de 2023.

CARDINALI, F.; CAMILLERI, J. A critical review of the material properties guiding the clinician's choice of root canal sealers. **Clinical Oral Investigations**, [S.l.] v. 27, n. 8, p. 4147-4155, agosto de 2023.

CARVALHO-JUNIOR, J. R. *et al.* Solubility and dimensional change after setting of root canal sealers: a proposal for smaller dimensions of test samples. **Journal of Endodontics**, [S.l.] v. 33, n. 9, p. 1110-1116, setembro de 2007.

CAVENAGO, B. C. *et al.* Influence of powder-to-water ratio on radiopacity, setting time, pH, calcium ion release and a micro-CT volumetric solubility of white mineral trioxide aggregate. **International Endodontic Journal**, [S.l.] v. 47, n. 2, p. 120-126, fevereiro de 2014.

CHANG, S. W. Chemical Composition and Porosity Characteristics of Various Calcium Silicate-Based Endodontic Cements. **Bioinorganic Chemistry and Applications**, [S.l.] v. 2018, artigo 2784632, fevereiro de 2018.

CINTRA, L. T. A. *et al.* Cytotoxicity, biocompatibility, and biomineralization of the new high-plasticity MTA material. **Journal of Endodontics**, [S.l.] v. 43, n. 5, p. 774-778, maio 2017.

COAGUILA-LLERENA, H. *et al.* Physicochemical properties of a bioceramic repair material - BioMTA. **Brazilian Dental Journal**, [S.l.] v. 31, n. 5, p. 511-515, setembro de 2020.

COLLARES, F. M. *et al.* Influence of radiopaque fillers on physicochemical properties of a model epoxy resin-based root canal sealer. **Journal of Applied Oral Science**, [S.l.] v. 21, n. 6, p. 533-539, dezembro de 2013.

CVEK, M. Treatment of non-vital permanent incisors with calcium hydroxide I. Follow-up of periapical repair and apical closure of immature roots. **Odontol Revy**, [S.l.] v. 23, n.1, p. 27-44, janeiro de 1972.

DARWEESH, F., SHAHAWY, T., ZAGHLOUL, N., ALMOWAQEE, M., Impact of a new silicate-based capping material on healing potentiality of traumatically exposed healthy dog's dental pulp, **Egyptian Dental Journal**, [S.l.] v. 66, n. 2, pp. 981-989, abril de 2020.

DELFINO, M. M., JAMPANI, J. L. de A., LOPES, C. S., TANOMARU, J. M. G., TANOMARU-FILHO, M., Comparison of Bio-C Pulpo and MTA Repair HP with White MTA: effect on liver parameters and evaluation of biocompatibility and bioactivity in rats. **International Endodontic Journal**, [S.l.] v.49, n.9, p. 1597-1613, setembro de 2021.

DUARTE, M. A. *et al.* pH and calcium ion release of 2 root-end filling materials. **Oral Surgery, Oral Medicine, Oral Pathology, Oral Radiology, and Endodontology**, [S.l.] v. 95, n. 3, p. 345-347, março de 2003.

DUARTE, M. A. H. *et al.* Evaluation of the propylene glycol association on some physical and chemical properties of mineral trioxide aggregate. *International Endodontic Journal*, [S.l.] v. 45, n. 6, p. 565-570, junho de 2012.

DUARTE, M. A. H.; MARCIANO, M. A.; VIVAN, R. R.; TANOMARU FILHO, M.; TANOMARU, J. M. G.; CAMILLERI, J. Tricalcium silicate-based cements: properties and modifications. *Brazilian Oral Research*, [S.l.] v. 32, e70, outubro de 2018.

DUQUE, J. A. *et al.* The effect of mixing method on tricalcium silicate-based cement. **International Endodontic Journal**, [S.l.] v. 51, n. 1, p. 69-78, janeiro de 2018.

ESTRELA, C.; *et al.* Mechanism of action of Bioactive Endodontic Materials. *Brazilian Dental Journal*, [S.l.] v. 34, n. 1, p. 1-11, fevereiro de 2023.

FLORES OROZCO, E. I. *et al.* Case report: Interdisciplinary management of a complex odontoma with a periapical involvement of superior anterior teeth. **F1000Research**, [S.l.] v. 8, artigo 1531, agosto de 2019.

FRIDLAND, M.; ROSADO, R. Mineral trioxide aggregate (MTA) solubility and porosity with different water-to-powder ratios. **Journal of Endodontics**, [S.l.] v. 29, n. 12, p. 814-817, dezembro de 2003.

GANDOLFI, M. G. *et al.* Calcium silicate and calcium hydroxide materials for pulp capping: biointeractivity, porosity, solubility and bioactivity of current formulations. **Journal of Applied Biomaterials & Functional Materials**, [S.l.] v. 13, n. 1, p. 43-60, março de 2015.

GANDOLFI, M. G. *et al.* Chemical-Physical Properties and Bioactivity of New Premixed Calcium Silicate-Bioceramic Root Canal Sealers. **International Journal of Molecular Sciences**, [S.l.] v. 23, n. 22, artigo 13914, 11 novembro de 2022.

GANDOLFI, M. G. *et al.* Setting time and expansion in different soaking media of experimental accelerated calcium-silicate cements and ProRoot MTA. **Oral Surgery, Oral Medicine, Oral Pathology, Oral Radiology, and Endodontology**, [S.l.] v. 108, n. 6, p. e39-e45, dezembro de 2009.

GANDOLFI, M. G.; SIBONI, F.; PRATI, C. Chemical-physical properties of TheraCal, a novel light-curable MTA-like material for pulp capping. **International Endodontic Journal**, [S.l.] v. 45, n. 6, p. 571-579, junho de 2012.

GANDOLFI, M.G.; TADDEI, P.; TINTI, A.; PRATI, C. Apatite-forming ability (bioactivity) of ProRoot MTA. **International Endodontic Journal**, [S.l.] v. 43, n. 10, p. 917-929, outubro de 2010.

HOLLAND, R. *et al.* Reaction of rat connective tissue to implanted dentin tubes filled with a white mineral trioxide aggregate. **Brazilian Dental Journal**, [S.l.] v. 13, n. 1, p. 23-26, janeiro de 2002.

HUNGARO DUARTE, M. A. *et al.* Effect of different radiopacifying agents on the physicochemical properties of white Portland cement and white mineral trioxide aggregate. **Journal of Endodontics**, [S.l.] v. 38, n. 3, p. 394-397, março de 2012.

ISLAM, I.; CHNG, H. K.; YAP, A. U. Comparison of the physical and mechanical properties of MTA and portland cement. **Journal of Endodontics**, [S.l.] v. 32, n. 3, p. 193-197, março de 2006.

KATO, G. *et al.* Ex vivo osteogenesis induced by calcium silicate-based cement extracts. **Journal of Functional Biomaterials**, [S.l.] v. 14, n. 6, artigo 314, junho de 2023.

LI, Q.; HURT, A. P.; COLEMAN, N. J. The application of ²⁹Si NMR spectroscopy to the analysis of calcium silicate-based cement using Biodentine™ as an example. **Journal of Functional Biomaterials**, [S.l.] v. 10, n. 2, artigo 25, maio de 2019.

LIU, W. N.; CHANG, J.; ZHU, Y. Q.; ZHANG, M. Effect of tricalcium aluminate on the properties of tricalcium silicate-tricalcium aluminate mixtures: setting time, mechanical strength and biocompatibility. **International Endodontic Journal**, [S.l.] v. 44, n. 1, p. 41-50, janeiro de 2011.

MAHMOUD, O. *et al.* Morphological and Chemical Analysis of Different Types of Calcium Silicate-Based Cements. **International Journal of Dentistry**, [S.l.] v. 2022, artigo 6480047, maio de 2022.

MARCIANO, M. A. *et al.* Assessment of Color Stability of White Mineral Trioxide Aggregate Angelus and Bismuth Oxide in Contact with Tooth Structure. **Journal of Endodontics**, [S.l.] v. 40, n. 8, p. 1235-1240, agosto de 2014.

MARCIANO, M.A.; GUIMARÃES, B. M.; AMOROSO-SILVA, P.; CAMILLERI, J., DUARTE, M. A. H. Physical and Chemical Properties and Subcutaneous Implantation of Mineral Trioxide Aggregate Mixed with Propylene Glycol. **Journal of Endodontics**, [S.l.] v. 42, n. 3, p. 474-479, março de 2016.

MEDEIROS, P. L. *et al.* Sealing ability of MTA, CPM, and MBPc as root-end filling materials: a bacterial leakage study. **Journal of Applied Oral Science**, [S.l.] v. 24, n. 2, p. 148-152, abril de 2016.

PARIROKH, M.; TORABINEJAD, M. Mineral trioxide aggregate: a comprehensive literature review--Part I: chemical, physical, and antibacterial properties. **Journal of Endodontics**, [S.l.] v. 36, n. 1, p. 16-27, janeiro de 2010.

PRIMUS, C.; TAY, F. R.; NIU, L. N. Bioactive Tri/dicalcium Silicate Cements for Treatment of Pulpal and Periapical Tissues. *Acta Biomater*, [S.l.] v. 96, p. 35-54, setembro de 2019.

QUEIROZ, M. B. *et al.* Development and evaluation of reparative tricalcium silicate-ZrO₂-Biosilicate composites. **Journal of Biomedical Materials Research Part B: Applied Biomaterials**, [S.l.] v. 109, n. 4, p. 468-476, abril de 2021.

ROCHA, A. C. R.; HERNÁNDEZ PADRÓN, G.; GARCÍA GARDUÑO, M. V.; GARCÍA ARANDA, R. L. Physicochemical analysis of MTA Angelus® and Biodentine® conducted with X-ray diffraction, dispersive energy spectrometry, X-ray fluorescence, scanning electron microscope and infrared spectroscopy. **Revista Odontológica Mexicana**, [S.l.] v. 19, n. 3, p. e170-e176, setembro de 2015.

ROIG, M.; ESPONA, J.; MERCADÉ, M.; DURAN-SINDREU, F. Horizontal root fracture treated with MTA, a case report with a 10-year follow-up. *Dental Traumatology*, [S.l.] v. 27, n. 6, p. 460-3, dezembro de 2011.

ROSATTO, C. M. P. de; SOUZA, G. L. de; FERRAZ, D. C.; SILVA, M. J. B.; TANOMARU FILHO, M.; MOURA, C. C. G. Physicochemical properties and osteoclastogenesis for three premixed calcium silicate-based sealers post set. **Brazilian Oral Research**, [S.l.] v. 36, e065, maio de 2022.

SANTOS, A.D; MORAES, J.C.; ARAÚJO E.B.; YUKIMITU, K.; VALÉRIO FILHO, W.V. Physico-chemical properties of MTA and a novel experimental cement. **International Endodontic Journal**, [S.l.] v. 38, n. 7, p. 443-447, julho de 2005.

SARZEDA, G. D. R. *et al.* Análise da composição química dos cimentos MTA Angelus® branco, cinza e HP Repair® através de Microscopia Eletrônica de Varredura (MEV) acoplada a Espectrômetro de Energia Dispersiva (EDS). **Revista de Odontologia da UNESP**, [S.l.] v. 48, artigo e20190093, julho de 2019.

SILVA, E. J. N. L. *et al.* Push-out bond strength of fast-setting mineral trioxide aggregate and pozzolan-based cements: ENDOCEM MTA and ENDOCEM Zr. **Journal of Endodontics**, [S.l.] v. 43, n. 5, p. 801-804, maio 2017.

TANOMARU-FILHO, M.; JORGE, E. G.; TANOMARU, J. M. G.; GONÇALVES, M. Radiopacity evaluation of new root canal filling materials by digitalization of images. **Journal of Endodontics**, [S.l.] v. 33, n. 3, p. 249-251, março de 2007.

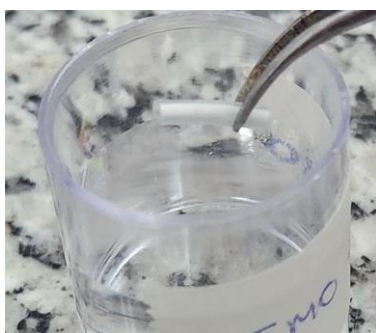
TORRES, F. F. E. *et al.* Effect of immersion in distilled water or phosphate-buffered saline on the solubility, volumetric change and presence of voids within new calcium silicate-based root canal sealers. **International Endodontic Journal**, [S.l.] v. 53, n. 3, p. 385-391, março de 2020.

VIVAN, R. R. *et al.* Evaluation of the physical and chemical properties of two commercial and three experimental root-end filling materials. **Oral Surgery, Oral Medicine, Oral Pathology, Oral Radiology, and Endodontology**, [S.l.] v. 110, n. 2, p. 250-256, agosto de 2010.

APÊNDICE A – Metodologia Detalhada da Pesquisa

pH

Tubos de polietileno de 1 mm de diâmetro foram seccionados em segmentos de 10 mm de a fim de permitir o preenchimento total pelos cimentos em análise previamente manipulados seguindo as descrições do fabricante. As amostras foram alocadas em recipientes plásticos de 10 ml preenchidos com água destilada e levados a estufa a 37°C e 95% de umidade. As análises foram feitas após 3, 12, 24, 72 horas, e 7, 14, 21 dias. Em cada período, os tubos eram removidos do recipiente plástico e colocado em outro também preenchido com água destilada. O líquido dos recipientes de plástico foram para análise de pH utilizando-se phmetro previamente calibrado Ultrabasic (Denver Instrument Company, Arvada, Colorado, USA).

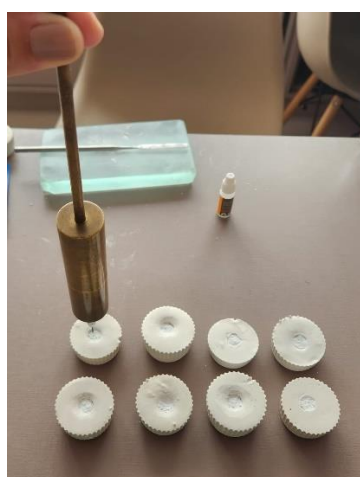


Fonte: autor (2024)

Tempo de presa

Moldes de gesso (Durone-IV; Dentsply, Petópolis, Rio de Janeiro, Brazil) foram preparados contendo diâmetro de 10 mm e altura de 1 mm. Após a presa do gesso,

os moldes foram imersos em água destilada por um período de 24 horas antes do início do teste, para que ficassem úmidos. Em seguida, os moldes foram preenchidos com os cimentos previamente manipulados de acordo com as orientações do fabricante. Utilizou-se um recipiente de vidro para acomodar as amostras que foram colocadas em uma estufa a 37°C e 95% de umidade durante o período de análise. Periodicamente, uma agulha de Gilmore com 100 ± 0.5 g e diâmetro de 2 ± 0.1 mm era posicionado verticalmente sob a amostra para determinar o tempo de presa dos cimentos analisados. Durante o teste, o material foi mantido em estufa a 37°C e 95% de umidade e as agulhas eram limpas entre as análises. O tempo de presa foi determinado no período entre a manipulação dos cimentos e o momento em que a agulha não produzia mais marcação nas amostras.



Fonte: autor (2024)

Solubilidade

Antecipadamente, confeccionou-se modelos plásticos com dimensões de 1,5 cm de altura e 7,75 cm de diâmetro interno (Carvalho-Junior et al., 2007). Os modelos foram preenchidos com quantidade de cimento com massa inicial

previamente determinada e já espatulados de acordo com as normas do fabricante. Um fio de nylon foi integrado ao modelo de modo a ficar aderido ao cimento após sua presa. Os moldes foram posicionados em uma lamínula de vidro coberta com papel celofane e preenchidos com os cimentos analisados. Um fio de náilon foi fixado nos moldes de plástico e outra lamínula de vidro, também coberta com papel celofane, foi posicionada sobre os moldes. A montagem foi pressionada manualmente e armazenada em um forno a uma temperatura de 37°C por um período de tempo três vezes maior do que o tempo de ajuste de cada material. As amostras foram alocadas em recipiente plástico contendo 7,5 ml de solução salina tamponada com fosfato (PBS), estando suspensas pelo fio de nylon e foram mantidas em estufa a 37°C por 7 dias. Após esse período, os espécimes foram removidos da solução e levadas a um dessecador. A massa final foi medida em balança de precisão HM-200 (A & D Engineering, Inc., Bradford, MA) a cada 24 horas até que a massa se estabilizasse.



Fonte: autor (2024)

MEV/EDS

Amostras dos cimentos contendo diâmetro de 10 mm e espessura de 1 mm foram preparadas e levadas a estufa a 37°C e 95% de umidade até tomar presa. Após a presa, cada amostra foi revestida separadamente com fita condutiva de carbono de dupla face e levadas para análise. Para a caracterização da superfície, foi utilizada

Microscopia Eletrônica de Varredura (SEM) acoplada ao Espectrômetro por Dispersão de Energia (EDS - Sistema por Dispersão de Energia) para análise semi-quantitativa.

Ftir

Os espectros de FTIR foram obtidos utilizando pastilhas de brometo de potássio (KBr) com 0,05 g de cada material e 0,1 g de KBr. A mistura foi imediatamente transferida para um molde de prensagem de 13 mm de diâmetro, onde foi colocada sob vácuo em uma prensa de anel RIIK de 10 toneladas por 1 minuto. Os espectros foram obtidos utilizando um espectrômetro FT-IR calibrado (Vertex 70v; Bruker, Billerica, MA, EUA) operando no modo de transmitância normal, resolução espectral de 4 cm⁻¹ e faixa de 400 a 4000 cm⁻¹ sob vácuo. Os dados espectrais de FTIR não requerem processamento de sinal.

Análise estatística

Os dados coletados foram armazenados em banco de dados elaborados em planilha no Excel previamente à análise estatística. Todos os dados foram analisados com o programa estatístico GraphPad Prism 9.02 (GraphPad Software, Inc., CA, EUA) ($\alpha = 0,05$). A distribuição normal destes dados foi confirmada pelo teste de normalidade de Shapiro-Wilk e então as propriedades físico-químicas foram submetidas ao teste t de Student. Os valores diagnósticos foram expressos como média e desvio padrão para cada condição.

ANEXO A – Normas da Revista Biomedical Materials Research Part B

Article Preparation Support

[Wiley Editing Services](#) offers expert help with English Language Editing, as well as translation, manuscript formatting, figure illustration, figure formatting, and graphical abstract design – so you can submit your manuscript with confidence.

Also, check out our resources for [Preparing Your Article](#) for general guidance about writing and preparing your manuscript.

Free format submission

The Journals of Biomedical Materials Research Part A and B now offer [Free Format submission](#) for a simplified and streamlined submission process.

Before you submit, you will need:

- Your manuscript: this should be an editable file including text, figures (can appear embedded within the text where they are referenced), and tables, or separate files—whichever you prefer. All required sections should be contained in your manuscript, including abstract, introduction, methods, results, discussion and conclusions. Figures and tables should be embedded in the main text where they appear and have legends. Figures should be uploaded in the highest resolution possible.

References may be submitted in any style or format, as long as it is consistent throughout the manuscript. Supporting information should be submitted in separate files. If the manuscript, figures or tables are difficult for you to read, they will also be difficult for the editors and reviewers, and the editorial office will send it back to you for revision. Your manuscript may also be sent back to you for revision if the quality of English language is poor.

- An ORCID ID, freely available at <https://orcid.org>.
(Why is this important? Your article, if accepted and published, will be attached to your ORCID profile. Institutions and funders are increasingly requiring authors to have ORCID IDs.)
- The title page of the manuscript, including:
 - Your co-author details, including affiliation and email address.

(Why is this important? We need to keep all co-authors informed of the outcome of the peer review process.)

- Statements relating to our ethics and integrity policies (see details below), which may include any of the following

(Why are these important? We need to uphold rigorous ethical standards for the research we consider for publication):

- data availability statement
- funding statement
- conflict of interest disclosure
- ethics approval statement
- patient consent statement
- permission to reproduce material from other sources
- clinical trial registration

Funding

You should list all funding sources in the Acknowledgments section. You are responsible for the accuracy of their funder designation. If in doubt, please check the [Open Funder Registry](#) for the correct nomenclature.

Authorship

All listed authors should have contributed to the manuscript substantially and have agreed to the final submitted version. Review [editorial standards](#) and scroll down for a description of authorship criteria.

ORCID

This journal requires ORCID. Please refer to [Wiley's resources on ORCID](#).

Reproduction of Copyright Material

If excerpts from copyrighted works owned by third parties are included, credit must be shown in the contribution. It is your responsibility to also obtain written permission for reproduction from the copyright owners. For more information visit [Wiley's Copyright Terms & Conditions FAQ](#).

The corresponding author is responsible for obtaining written permission to reproduce the material "in print and other media" from the publisher of the original source, and for supplying Wiley with that permission upon submission.

Title Page

The title page should contain:

1. A brief informative title containing the major key words. The title should not contain abbreviations (see [Wiley's best practice SEO tips](#));
2. A short running title of less than 40 characters;
3. The full names of the authors;
4. The author's institutional affiliations where the work was conducted, with a footnote for the author's present address if different from where the work was conducted;
5. Acknowledgments.
6. All authors are required to include an institutional or organizational email when submitting a manuscript. Authors can update their profiles within the submission and review site to include personal emails for cc purposes.

Main Text File

The main text file should be in Word or PDF format or LaTeX and include:

Manuscripts can be uploaded either as a single document (containing the main text, tables and figures), or with figures and tables provided as separate files. Should your manuscript reach revision stage, figures and tables must be provided as separate files. The main manuscript file can be submitted in Microsoft Word (.doc or .docx) or LaTeX (.tex) format.

If submitting your manuscript file in LaTeX format via Research Exchange, select the file designation "Main Document – LaTeX .tex File" on upload. When submitting a LaTeX Main Document, you must also provide a PDF version of the manuscript for Peer Review. Please upload this file as "Main Document - LaTeX PDF." All supporting files that are referred to in the LaTeX Main Document should be uploaded as a "LaTeX Supplementary File."

LaTeX Guidelines for Post-Acceptance:

Please check that you have supplied the following files for typesetting post-acceptance:

- PDF of the finalized source manuscript files compiled without any errors.
- The LaTeX source code files (text, figure captions, and tables, preferably in a single file), BibTex files (if used), any associated packages/files along with all other files needed for compiling without any errors. This is particularly important if authors have used any LaTeX style or class files, bibliography files (.bbl, .bst, .blg) or packages apart from those used in the NJD LaTeX Template class file.
- Electronic graphics files for the illustrations in Encapsulated PostScript (EPS), PDF or TIFF format. Authors are requested not to create figures using LaTeX codes.

Your main document file should include:

- A short informative title containing the major key words. The title should not contain abbreviations
- The full names of the authors with institutional affiliations where the work was conducted, with a footnote for the author's present address if different from where the work was conducted;
- Acknowledgments;
- Abstract structured (intro/methods/results/conclusion) or unstructured
- Up to seven keywords;
- Practitioner Points (optional) Authors will need to provide no more than 3 'key points', written with the practitioner in mind, that summarize the key messages of their paper to be published with their article.
- Main body: formatted as introduction, materials & methods, results, discussion, conclusion
- References;
- Tables (each table complete with title and footnotes);
- Figures: Figure legends must be added beneath each individual image during upload AND as a complete list in the text.

Reference Style

This journal uses a numbered reference style (as indicated below); as the journal offers Free Format submission, however, this is for information only and you do not need to format the references in your article. This will instead be taken care of by the

typesetter.

Number references consecutively as they appear in the text. Material accepted for publication but not yet published may be listed in the References, but unpublished observations, personal communications, and material submitted for publication but not yet accepted should be cited parenthetically within the text (and not included among the numbered references). Style references entries using the Council of Biology Editors Style Manual, 5th Edition formats:

For journal articles:

Alexander A, Green WS. Total hip replacements: A second look. *J. Soc. Biomater.* 1989; 45: 345–366.

For books/chapters:

Ricci JL, Guichet J-M. Total hip replacement: A third look. Cindra AB, Franklin DE, editors. *State of the art orthopaedics, vol 3, Hips.* NewYork: Wiley; 1988: 56–59.

For abstracts:

Davidson GRH. Total hip replacement: A fifth look. *TransABCS* 1987;22-341–345.

For presentations:

Goodenough T. Total hip replacement: A sixth look. Presented at the 3rd Annu Mtg Orthop Res Soc, Boston, December 5–7, 1989.

Figures and Supporting Information

Figures, supporting information, and appendices should be supplied as separate files. You should review the [basic figure requirements](#) for manuscripts for peer review, as well as the more detailed post-acceptance figure requirements.

View [Wiley's FAQs](#) on supporting information.